

The Trusted Industry Leader for Pipeline Inspection and Rehabilitation Equipment

VEHICLE MOUNTED PIPELINE INSPECTION SYSTEMS



One Ton Van



HI-Cube Van

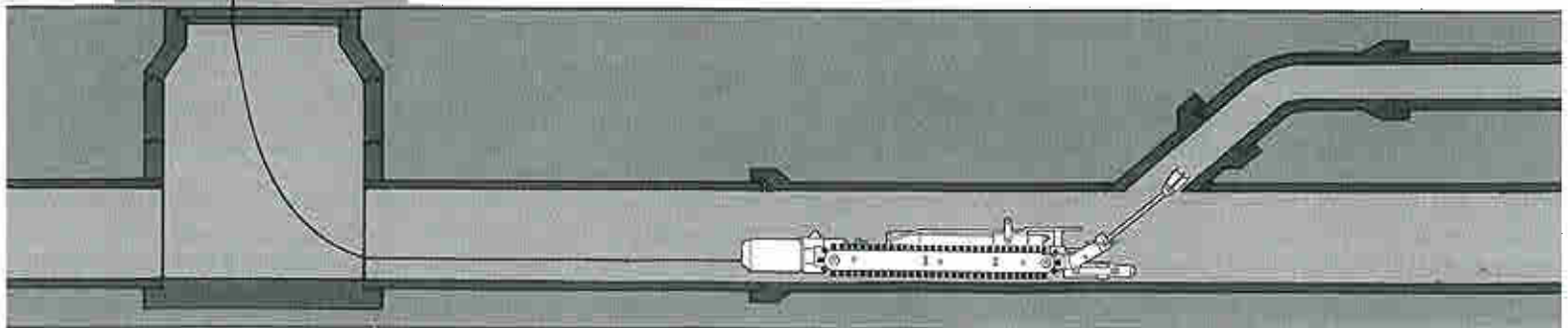
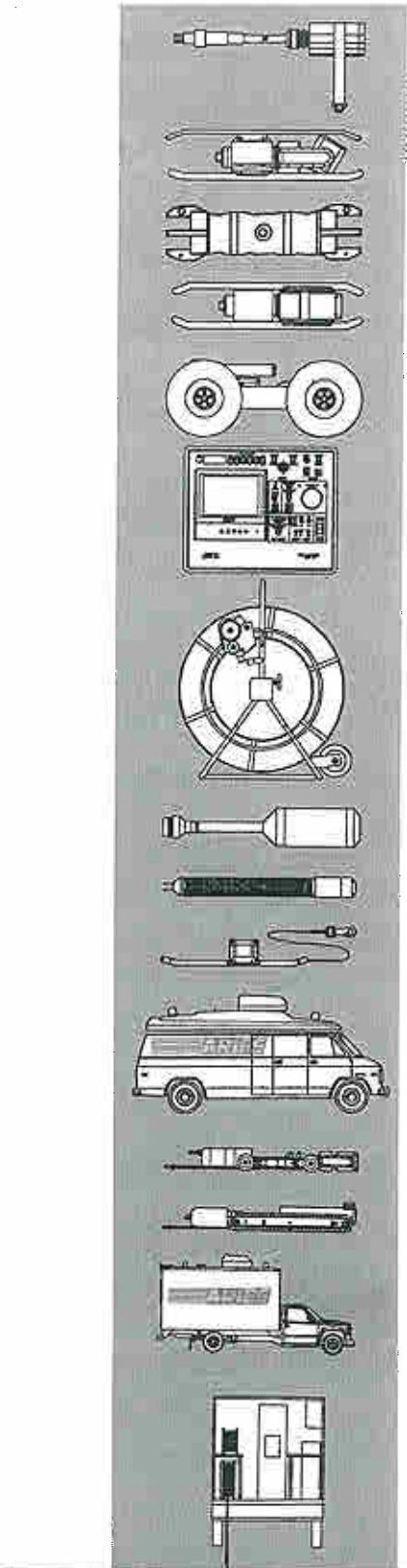


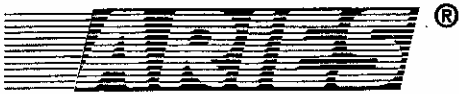
Step Van

Field Proven • Productive • Reliable

ARIES vehicle mounted pipeline inspection systems provide a professional platform for sewer inspection and rehabilitation operations. They are ideal for worker safety and inspection efficiency. Long recognized for high quality workmanship and a convenient and accessible layout, ARIES truck mounted systems continue to set the standard in the field.

An ARIES system delivers easy operation, high productivity, superior picture quality and accessible maintenance in one complete package.





ONE-TON VAN



Control Center Features and Benefits

- **Electronic Control System** mounted in a custom designed, heavy-duty, aluminum and steel rack for long term reliability
- **Large control desk** provides operator convenience while writing reports or reviewing sewer maps
- **Built-in desk mounted controllers** strategically located for operator efficiency

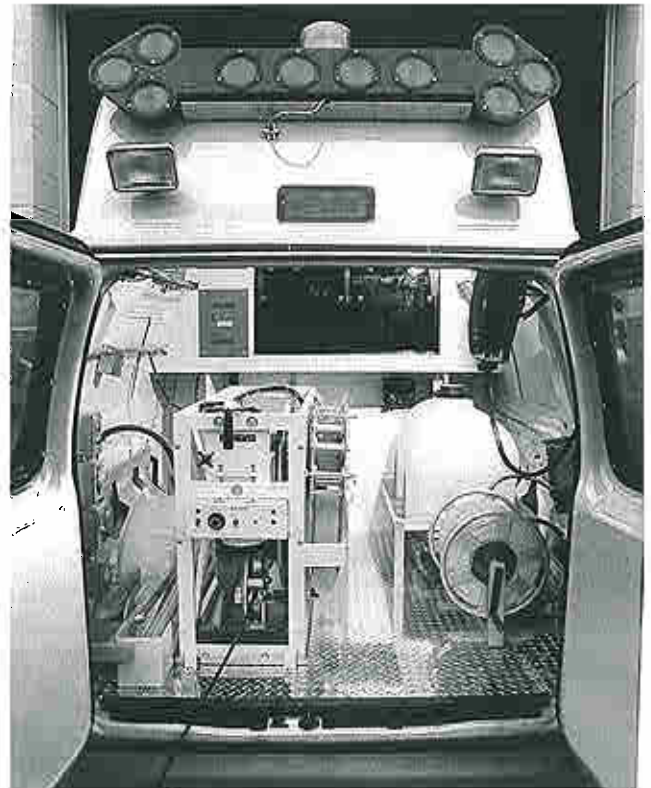


- **Built-in heavy-duty drawer** on roller bearings provides a place for inspection reports and other papers
- **Built-in bulkhead window** provides the operator a safe view of the equipment room
- **18 inch or 24 inch raised roof** for personnel safety and comfort
- **Roof mounted 13,500 BTU air conditioner** with a built in heater strip for operator comfort
- **Storage above the bulkhead** for tools, controllers, videotapes and supplies

Equipment Platform Features and Benefits

- **Heavy-duty diamond plate flooring** for long lasting endurance

- **Cable reel** with self aligning roller bearing system for easy cable pay out and long tractor pulls
- **Up to 1,500 feet of lightweight multi-conductor coaxial cable** for line inspection up to 3,000 feet from one entry point
- **Built-in cable guide** for inspection of offset and easement line sites
- **GFI electrical outlets** for operator safety
- **Wall mounted storage brackets** keep cables and equipment off of the floor



- **Retrieval/extractor pole assembly** for easy equipment entrance and removal from a manhole without an operator entering the manhole

Exterior Features and Benefits

- **Roof mounted strobe lights** for road and operator safety
- **Floodlights** mounted above the rear door for inspection during low light conditions



HI-CUBE AND STEP VAN

Control Center Features and Benefits

- **Electronic Control System** mounted in a custom designed, heavy-duty, aluminum and steel rack on a rollout assembly for easy walk behind access
- Large **control desk** provides operator convenience while writing reports or reviewing sewer maps
- **Built-in desk mounted controllers** strategically located for operator efficiency
- **Floor to ceiling storage cabinet** with adjustable shelving to meet operator needs



- Up to 1,500 feet of **lightweight multi-conductor coax cable** for line inspection up to 3,000 feet from one entry point
- **Built-in cable guide** for inspection of offset and easement line sites



- **Padded bench seat** for observer comfort. The seat has underneath storage for miscellaneous equipment.
- **Roof-mounted 13,500 BTU air conditioner** with built-in heater strip for operator comfort

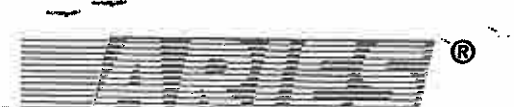
Equipment Platform Features and Benefits

- **Heavy-duty diamond plate flooring** and kick plates for long term wearability
- **Large equipment room** for equipment storage and a clean/safe floor space
- **Heavy-duty workbench and vise** for equipment maintenance
- **Cable reel** with self aligning roller bearing system for easy cable pay out and long tractor pulls

- **GFI plug outlet system** for operator safety
- **Wall mounted storage brackets** keep cables and equipment off of the floor
- **Retrieval/extraction pole assembly** enables equipment entrance to and removal from a manhole without an operator entering the manhole

Exterior Features and Benefits

- **Roof top strobe lights** for road and operator safety
- **Floodlights** mounted above the rear doors for inspection during low light conditions
- Hi-cube **Aero Cap** option is available to provide full walk through, cab to control room



ARIES Designed and Built Vehicle System

Components and Options

Cameras

Pan and Tilt color with 360° continuous rotation and lighting options for 6 inch and larger diameter lines

Eagle Eye color with remote focus and iris options for 6 inch and larger pipe diameters

Saturn III color micro for mainline and lateral lines

LETS color lateral inspection system from the mainline

Camera Tractor Carriages

TR2000 stainless steel tread crawler for 6 to 30 inch diameter lines

Multi-wheeled Crawler for 8 to 30 inch lines

Storm Line Transporter with pneumatic tires and camera lift for 24 inch and larger line sizes



Data Collection Systems

VD1000 with changeable defect identifiers and printout capabilities

VL2000 software package with download capabilities via laptop computer for data storage

VC3000 software package with rack mounted computer with video capture and down load features

(See individual brochures for more information)

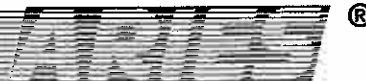


Additional Hi Cube/Step Van Options

- Gasoline or diesel powered chassis
- Side-mounted 15,000 BTU air conditioner
- Wall heater
- Rear mounted monitor
- Lockable, multi drawer, heavy-duty tool chest
- Heavy duty storage cabinets or aluminum shelving
- Wash down system: 15-25 gallon tank, pump, nozzle, and sink with faucet
- Heater band for hot and cold water
- Air compressor with hose and nozzles
- Front and rear mounted arrow boards
- Side-mounted strobe lights
- Lavatory with dry chemical toilet
- Swing boom hoist with stainless steel wire rope
- Rear door, swing-out or rollup
- Power winch system and camera skid assemblies

Additional One Ton Van Options

- Gasoline or diesel powered chassis
- Wall heater
- Air compressor
- Rear mounted monitor
- Rear mounted arrow board
- Wash down system, 15 gallon
- Fold down bumper mounted hoist, swing type
- Power winch system and camera skid assemblies
- Wrap around curtain separates operator and cab areas to block sunlight



E-mail: ariesind@nconnect.net

Corporate Offices

N63 W22641 Main St.
Sussex, WI 53089
Toll Free: 800-234-7205
Phone: 262-246-3900
Fax: 262-246-7099

Southeastern Regional Office

1441 SW 10th Ave. # 202
Pompano Beach, FL 33069
Toll Free: 800-327-4346
Phone: 954-785-5540
Fax: 954-785-5014

Western Regional Office

5748 E. Shields Ave.
Fresno, CA 93727
Toll Free: 888-285-0366
Phone: 559-292-5382
Fax: 559-291-0463



Visit our Web Site
www.ariesind.com

Packaged to Perform